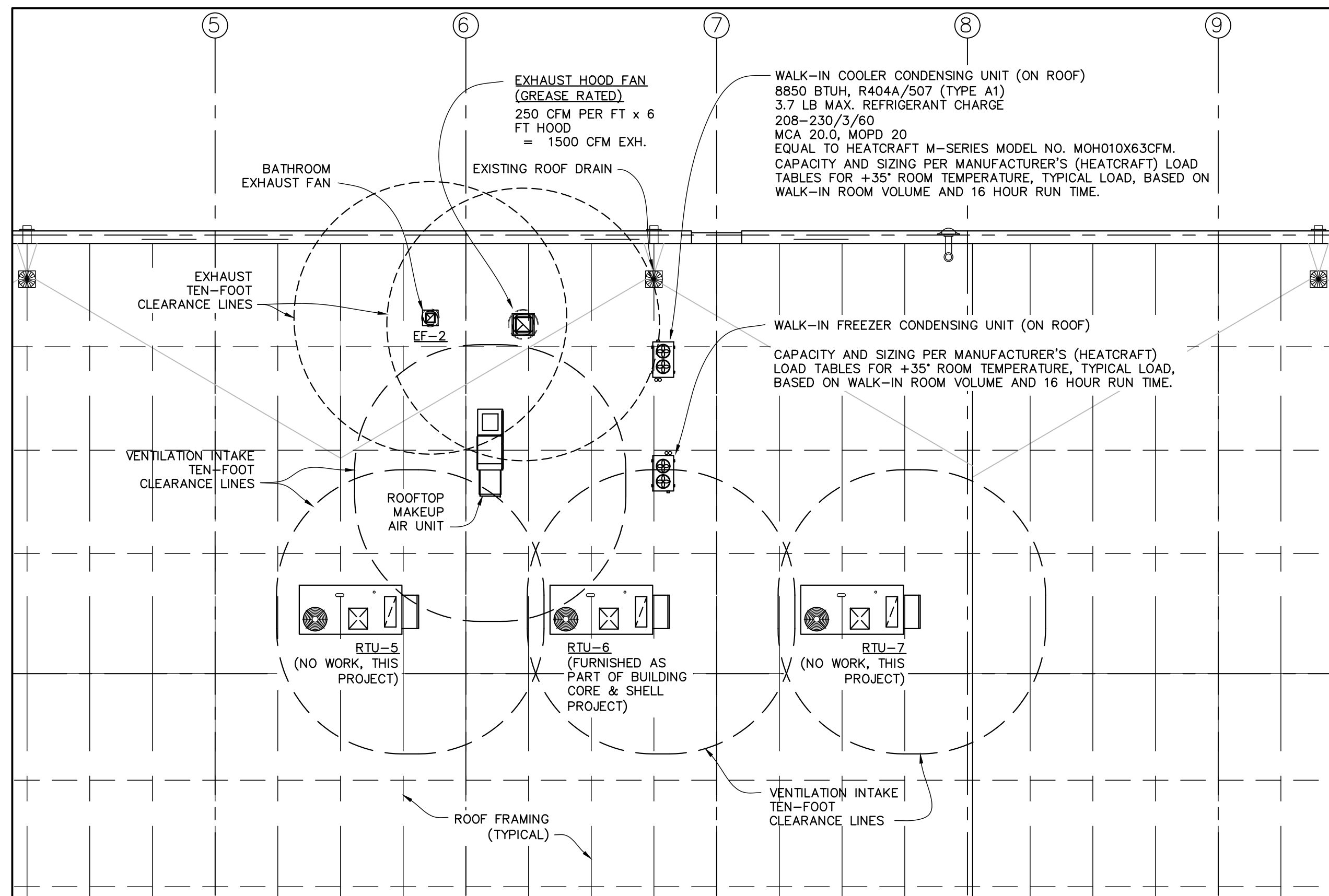
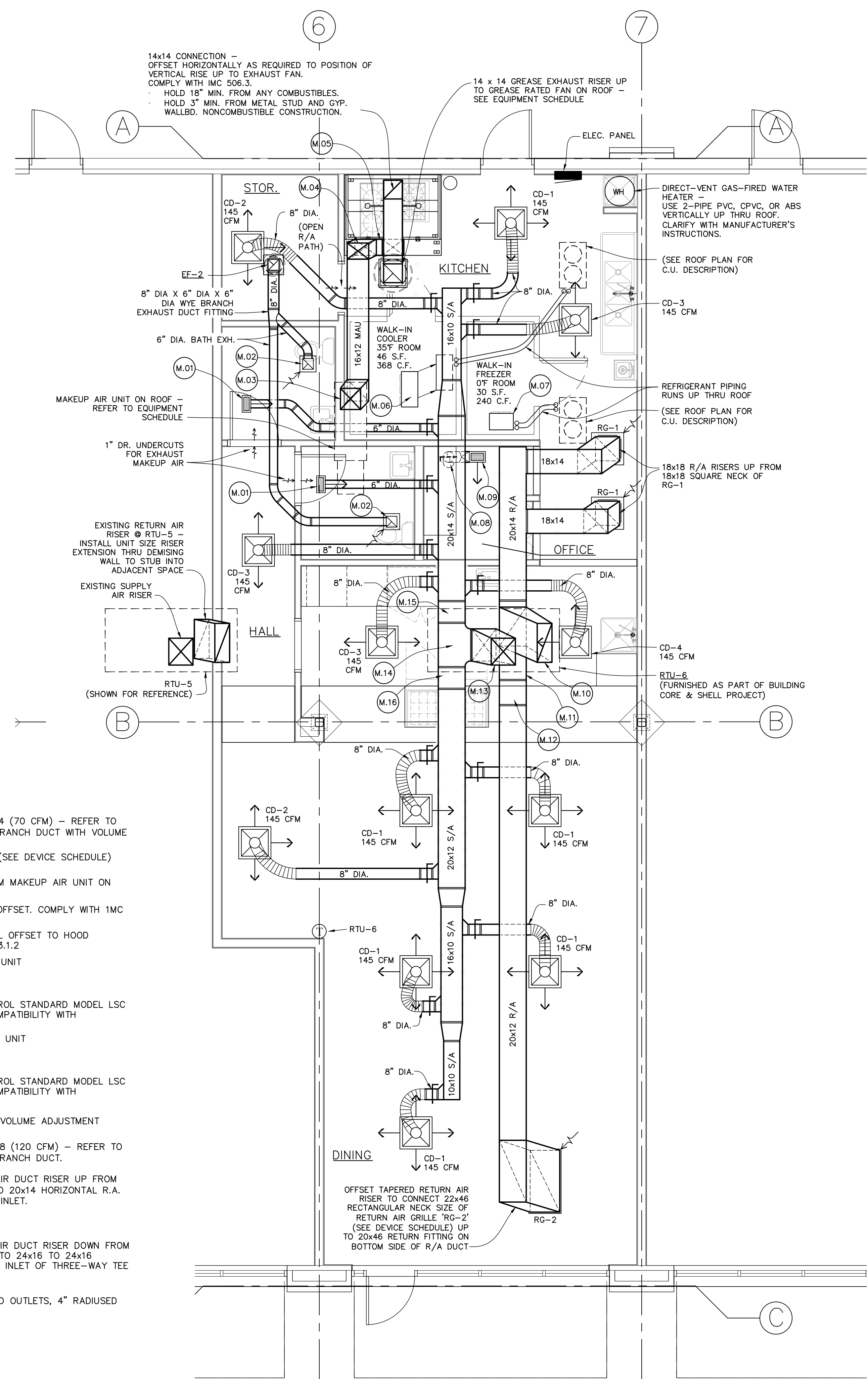


2 MECHANICAL GAS PIPING PLAN
M2.01 SCALE: 1/4" = 1'-0"



3 ROOF MECHANICAL PLAN
M2.01 SCALE: 1/8" = 1'-0"



1 TENANT MECHANICAL PLAN
M2.01 SCALE: 1/4" = 1'-0"

MECHANICAL KEY NOTES -

- M.01 CEILING SUPPLY REGISTER 'CR-1' 10x4 (70 CFM) - REFER TO DEVICE SCHEDULE SUPPLIED VIA 6" BRANCH DUCT WITH VOLUME ADJUSTMENT DAMPER.
- M.02 CEILING EXHAUST GRILLE 'EG-1' 8x8 (SEE DEVICE SCHEDULE) WITH 6" DIA. EXHAUST DUCT FITTING.
- M.03 16x12 MUA SUPPLY RISER DOWN FROM MAKEUP AIR UNIT ON ROOF. COMPLY WITH IMC 506.3.1.2
- M.04 16x12 MUA SUPPLY RISER VERTICAL OFFSET. COMPLY WITH IMC 506.3.1.2
- M.05 16x12 MUA SUPPLY DUCT HORIZONTAL OFFSET TO HOOD CONNECTION. COMPLY WITH IMC 506.3.1.2
- M.06 WALK-IN COOLER FAN & EVAP. COIL UNIT 0000 BTUH, 000 CFM 115/1/60 (LOW PROFILE) EQUAL TO HEATCRAFT CLIMATE CONTROL STANDARD MODEL LSC SERIES. VERIFY CONDENSING UNIT COMPATIBILITY WITH MANUFACTURER.
- M.07 WALK-IN FREEZER FAN & EVAP. COIL UNIT 0000 BTUH, 000 CFM 115/1/60 (LOW PROFILE) EQUAL TO HEATCRAFT CLIMATE CONTROL STANDARD MODEL LSC SERIES. VERIFY CONDENSING UNIT COMPATIBILITY WITH MANUFACTURER.
- M.08 8" BOTTOM BRANCH TAKE-OFF WITH VOLUME ADJUSTMENT DAMPER.
- M.09 CEILING SUPPLY REGISTER 'CR-2' 12x8 (120 CFM) - REFER TO DEVICE SCHEDULE SUPPLIED VIA 8" BRANCH DUCT.
- M.10 TAPERED VERTICAL OFFSET RETURN AIR DUCT RISER UP FROM SIZE 20x28 RETURN FITTING (OPEN TO 20x14 HORIZONTAL R.A. DUCT) UP TO UNIT SIZE RETURN AIR INLET.
- M.11 20x14 HORIZONTAL R.A. DUCT
- M.12 20x12 TO 20x14 DUCT TRANSITION
- M.13 TAPERED VERTICAL OFFSET SUPPLY AIR DUCT RISER DOWN FROM UNIT SIZE SUPPLY DISCHARGE DOWN TO 24x16 TO 24x16 RADIUSED 90 DEGREE ELBOW TO SIDE INLET OF THREE-WAY TEE FITTING.
- M.14 THREE-WAY TEE FITTING - 24x16 S/A SIDE INLET, (2) 20x16 END OUTLETS, 4" RADIUSED CORNERS (SEE PLAN)
- M.15 20x16 TO 20x14 DUCT TRANSITION
- M.16 20x16 TO 20x12 DUCT TRANSITION